



We asked our customers; "How can we improve the **MX-330 PC10**?" —they replied; **MAKE IT BIGGER.** Introducing; the **MX-420 PC10**

**New!**



5-Axis Vertical Machining Center

**MX-420** **PC10**

## Features

- Fully automated 5 axis unmanned production.
- Matsura hand-built 5 axis quality; exceptional performance, low cost of ownership & assured residual value.
- Manned or Unmanned; ergonomic & dynamic design performance assures productivity.
- Equipped with the **Matsura G-Tech 31i**; touch screen with large display for operator comfort & precise control.

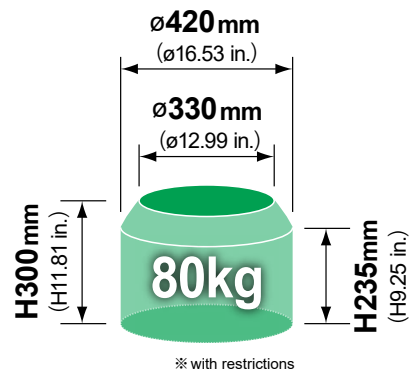
### MAXIA BT40 Spindle Line up

From high speed aluminium machining to pre-hardened steels; the MAXIA spindle options offered with the **MX-420** are the pinnacle of 70 years of prestigious Matsura spindle technology. A 15,000min<sup>-1</sup> with 65.1N·m of torque is installed as standard. A high-power 15,000min<sup>-1</sup> with 119.3N·m and a high-speed 20,000 min<sup>-1</sup> with 108.4N·m are available as options.

### Proven & Reliable Multi-Pallet System

Even with such a small footprint, saving you valuable factory space, the MX Series of automated 5 axis machines achieve unprecedented levels of unmanned production - adding a wage free machining shift to your business.

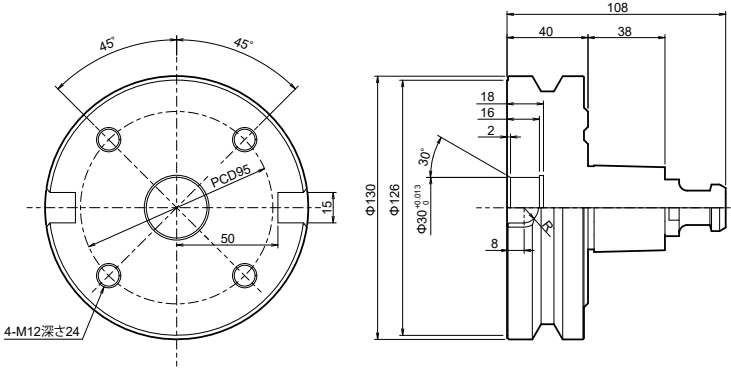
#### ■ Max. workpiece size



**MAXIA**  
Innovation by Matsura

## MX-420 PC10 Table Top View

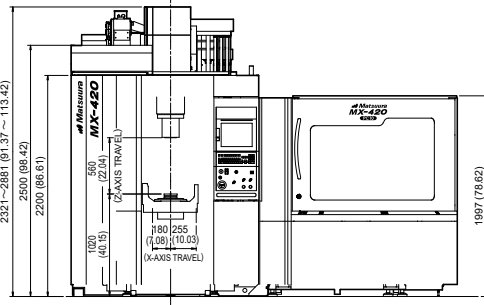
Unit : mm



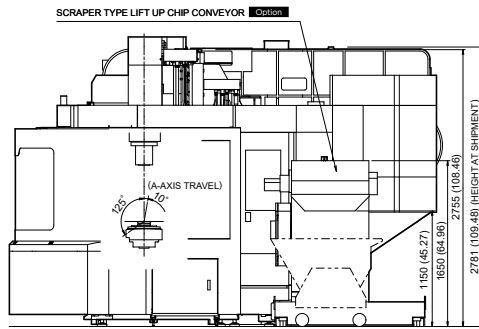
## MX-420 PC10 External View

Unit : mm (in.)

Front View

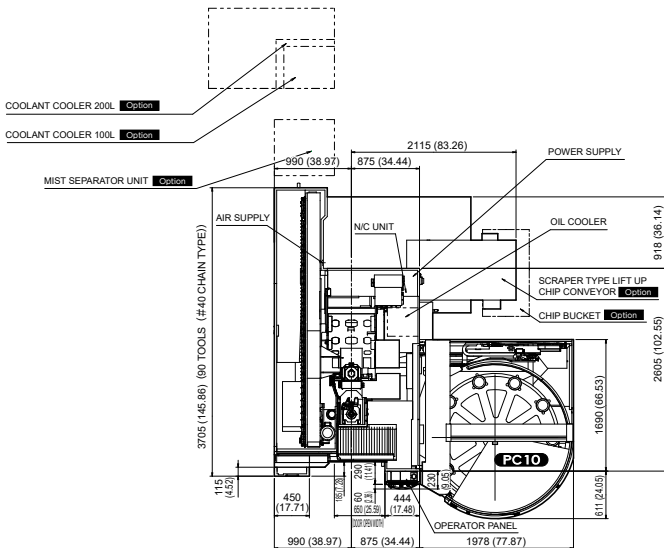


Right Side View



## MX-420 PC10 Floor Plan

Unit : mm (in.)



## MX-420 PC10 Machine Specifications

### ■ Movement and Ranges

X-axis stroke	mm (in.)	435 (17.13)
Y-axis stroke	mm (in.)	465 (18.31)
Z-axis stroke	mm (in.)	560 (22.05)
A-axis rotation angle	deg	-125 ~ +10
C-axis rotation angle	deg	360

### ■ Pallet Specification

Working surface	mm (in.)	ø130 (5.12)
Pallet type		CAPTO C6
Number of pallets		10 (Floor pallet system)
Loading capacity	kg (lb.)	80 (176)
Max. workpiece size	mm (in.)	ø420 × H300 (ø16.53 × H11.81) (with restrictions)

### ■ Spindle

Spindle speed	min <sup>-1</sup> (kW, N·m)	15000 (5.5 / 7.5, 65.1)	Standard
	min <sup>-1</sup> (kW, N·m)	15000 (7.5 / 15, 119.3)	Option
	min <sup>-1</sup> (kW, N·m)	20000 (15 / 18.5, 108.4)	Option
Spindle speed change command		S5 digits direct command	
Type of spindle taper hole		7/24 taper #40 (BT double contact type)	
Spindle bearing inner diameter	mm (in.)	ø70 (ø2.75)	
Spindle motor output	kW	AC 5.5 / 7.5	
Max. spindle torque	N·m	65.1	

### ■ Feedrate

Rapid traverse rate	X / Y / Z	mm/min (ipm)	40000(1574.8)
	A / C	min <sup>-1</sup>	17 / 33
Feedrate	X / Y / Z	mm/min (ipm)	1 ~ 40000 (0.03 ~ 1574.8)
	A / C	min <sup>-1</sup>	17 / 33

### ■ Automatic Tool Changer

Type of tool shank		JIS B 6339 tool shank 40T	
Pullstud		JIS B 6339 pullstud 40P	
Tool storage capacity	tools	30 (Drum magazine)	Standard
	tools	60 (Chain magazine)	Option
	tools	90 (Chain magazine)	Option
Max. tool diameter	mm (in.)	ø80 (ø3.14) (With adjacent tools) ø150 (ø5.90) (Without adjacent tools)	
	mm (in.)	300 (11.81)	
Max. tool mass	kg (lb.)	10 (22.05)	
Method of tool selection		Memory random system	

### ■ Power Sources

Electrical power supply	kVA	31 (Depends on the options provided)
Power supply voltage	V	AC 200 / 220 ± 10% Transformer required for the voltage except above
Power supply frequency	Hz	50 / 60 ± 1

### ■ Tank Capacity

Coolant tank capacity	L	350	Standard
Coolant tank capacity (Lift-up chip conveyor)	L	600	Option
Oil cooler tank capacity	L	14 (Total capacity: 16)	

### ■ NC System

Control system		Matsura G-Tech 31i
----------------	--	--------------------



**Matsura**

URL : <https://www.matsura.co.jp/>  
E-MAIL : [webmaster@matsura.co.jp](mailto:webmaster@matsura.co.jp)

### MATSURA MACHINERY CORPORATION

4-201 Higashimoriida Fukui City 910-8530 Japan TEL : +81-776-56-8106 FAX : +81-776-56-8151

**MATSURA EUROPE GMBH** ([www.matsura.de/](http://www.matsura.de/))

Berta-Cramer-Ring 21 D-65205 Wiesbaden-Delkenheim, Germany TEL : +49-6122-7803-80 FAX : +49-6122-7803-33

**MATSURA MACHINERY LTD.** ([www.matsura.co.uk/](http://www.matsura.co.uk/))

Gee Road, Whitwick Business Park, Leicestershire LE67 4NH, England TEL : +44-1530-511-400 FAX : +44-1530-511-440

**ELLIOTT MATSUURA CANADA INC.** ([www.elliottmachinery.com/](http://www.elliottmachinery.com/))

2120 Buckingham Road Oakville Ontario L6H 5X2, Canada TEL : +1-905-829-2211 FAX : +1-905-829-5600

**MATSURA MACHINERY USA INC.** ([www.matsurausa.com/](http://www.matsurausa.com/))

325 Randolph Ave., St. Paul, MN 55102, U.S.A. TEL : +1-651-289-9700